

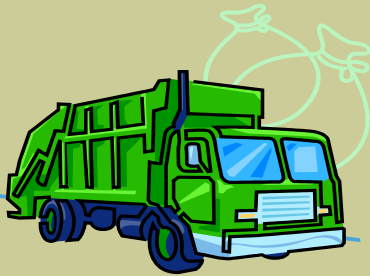
# Bulk Pick Up October 22, 2017



## VILLAGE OFFICE HOURS

Monday—Thursday  
7:30am to 4:30pm  
Friday  
8am to 12pm

845-778-2177 x1501  
www.villageofwalden.org  
ONE MUNICIPAL  
SQUARE  
WALDEN, NY 12586



CUSTOMER  
SERVICE  
845-572-3300



## Village of Walden Residential Garbage Customers...

Please have your household bulk items curbside on **Sunday, October 22, 2017**. Trucks will be going through our Village from October 23 - October 27, 2017 with all items picked up by Friday, October 27th.

**Once the truck has completed your street,  
it will NOT return.**

**BULK ITEMS INCLUDE:** Appliances, furniture, hot water heaters, gas grills (no tanks), lawn chairs, Rugs (4ft in length, rolled & tied). Freon **MUST** be removed before pickup & tagged by a professional for refrigerators, freezers and air conditioners (doors need to be removed).

**DO NOT PUT OUT:** Construction/renovation/demolition materials (ie: wood, toilets, sinks, bathtubs, cabinets, paint cans, etc.), hazardous waste, yard debris, tires, gas tanks, or fencing & metal, or electronic equipment\*\* (TV's, Computers, Monitors, CPU's, Printers, etc.). (Please be advised that these items will **NOT** be picked up & if left curbside after the truck has gone down your street, you may be subject to a violation of Village Code)

\*\*Please be advised that printers, fax machines, computer monitors and towers, scanners, small servers, cables/wires, laptops, cell and smart phones, tablets, video game consoles, DVD players, VCR's, and digital music players can be brought to the **Orange County Transfer Stations** as they will now accept these items free of charge. Televisions will also be accepted at a rate of \$5 per unit with no restriction on size. Small appliances, microwaves and vacuum cleaners will not be accepted. The Newburgh Transfer Station is located off of Route 17K, next door to Orange County Choppers and Stewart ANG Base and is open Monday-Friday 8am - 3:30pm & Saturdays 7am to 12pm. Feel free to contact them at: 845-291-2640\*\*